

OKLAHOMA DEPARTMENT OF TRANSPORTATION					
FED. ROAD DIST. NO.	STATE	JOB PIECE NO.	FISCAL YEAR	SHEET NO.	TOTAL SHEETS
	OKLA.				
DESCRIPTION			REVISIONS	DATE	

**NOTE:**  
ALL REFERENCE POINTS ARE 1/2" IRON PINS WITH CA3949 CAPS UNLESS OTHERWISE NOTED ON SURVEY.

NORTH 1/4 CORNER - ODOT STA. No. W-75-809 - FOUND 1/2" IRON PIN AS SHOWN ON OCCR PREPARED BY DAVE L. KNEUBUHL PREPARED ON JUNE 6, 2011.

NW CORNER - ODOT STA. No. W-75-808 - FOUND 5/8" IRON PIN AS SHOWN ON OCCR PREPARED BY DAVE L. KNEUBUHL PREPARED ON JUNE 6, 2011.

NE CORNER - ODOT STA. No. W-75-810 - FOUND 5/8" IRON PIN AS SHOWN ON OCCR PREPARED BY DAVE L. KNEUBUHL PREPARED ON JUNE 6, 2011.

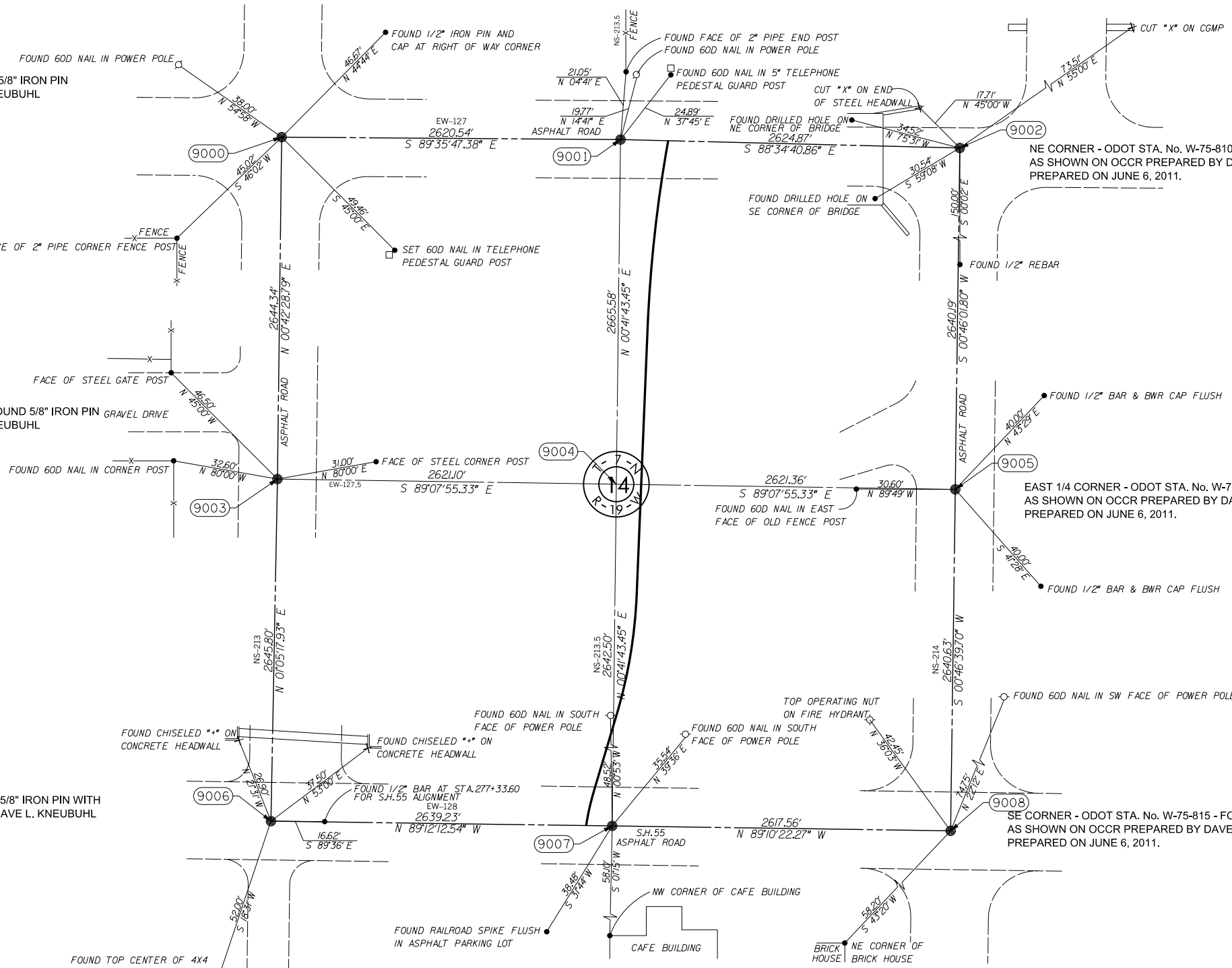
WEST 1/4 CORNER - ODOT STA. No. W-75-811 - FOUND 5/8" IRON PIN AS SHOWN ON OCCR PREPARED BY DAVE L. KNEUBUHL PREPARED ON JUNE 6, 2011.

EAST 1/4 CORNER - ODOT STA. No. W-75-812 - FOUND 5/8" IRON PIN AS SHOWN ON OCCR PREPARED BY DAVE L. KNEUBUHL PREPARED ON JUNE 6, 2011.


SW CORNER - ODOT STA. No. W-75-813 - FOUND 5/8" IRON PIN WITH CAP BWR AS SHOWN ON OCCR PREPARED BY DAVE L. KNEUBUHL PREPARED ON JUNE 6, 2011.

SE CORNER - ODOT STA. No. W-75-815 - FOUND 5/8" IRON PIN AS SHOWN ON OCCR PREPARED BY DAVE L. KNEUBUHL PREPARED ON JUNE 6, 2011.

SOUTH 1/4 CORNER - ODOT STA. No. W-75-814 - SET MAG NAIL WITH TAG No. CA3949 PER REFERENCES AS SHOWN ON OCCR PREPARED BY DAVE L. KNEUBUHL PREPARED ON JUNE 6, 2011.



NOTE: REFERENCE'S SHOWN ARE NOT TO SCALE.

PLS	CRS	12/12	<b>OKLAHOMA DEPARTMENT OF TRANSPORTATION</b> <b>SURVEY DIVISION</b>  <b>SMITH ROBERTS BALDSCHWILER, LLC</b> <small>100 N.E. 5th Street Oklahoma City, OK 73104 Telephone: (405) 840-7094 Fax: (405) 840-5116</small> <b>SURVEY DATA SHEET</b>
DRAWN	TDL	12/12	
CHECKED	JAC	12/12	
APPROVED	CRS	12/12	
CREW	BC, SG, BH	SWO 4837 (1)	
PROJECT NO. 28774(Q4) SHEET NO. SD09			